



Installation Guide

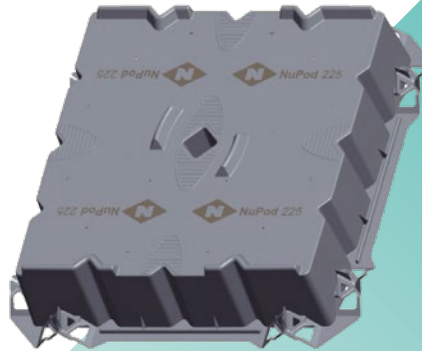
Products & Dimensions



NP150-2.25

Overall Dimensions:

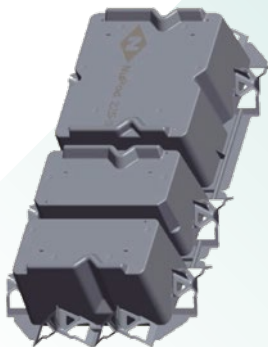
Length 480 mm
Width 440 mm
Height 150 mm



NP225

Overall Dimensions:

Length 990 mm
Width 990 mm
Height 225 mm



NP225-3.5

Overall Dimensions:

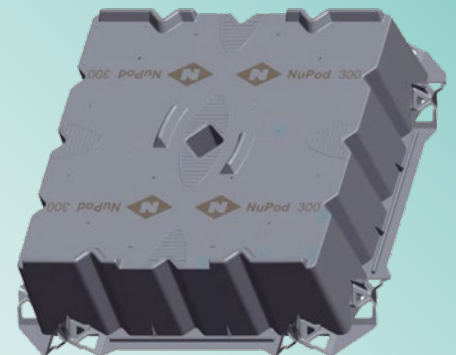
Length 990 mm
Width 440 mm
Height 225 mm



NP300-3.5

Overall Dimensions:

Length 990 mm
Width 440 mm
Height 300 mm



NP300

Overall Dimensions:

Length 990 mm
Width 990 mm
Height 300 mm



Safety First

Do not run on Pods

Walk only. Running is a safety hazard



Where to walk

When walking on the pods follow the easy purpose designed footprints



Cut/separate segments

To cut/separate the NuPod segments use a Stanley knife



1
Cut score deeply



2
Bend parts



3
Snap segments apart
or use power cutting tool







Installation Instructions

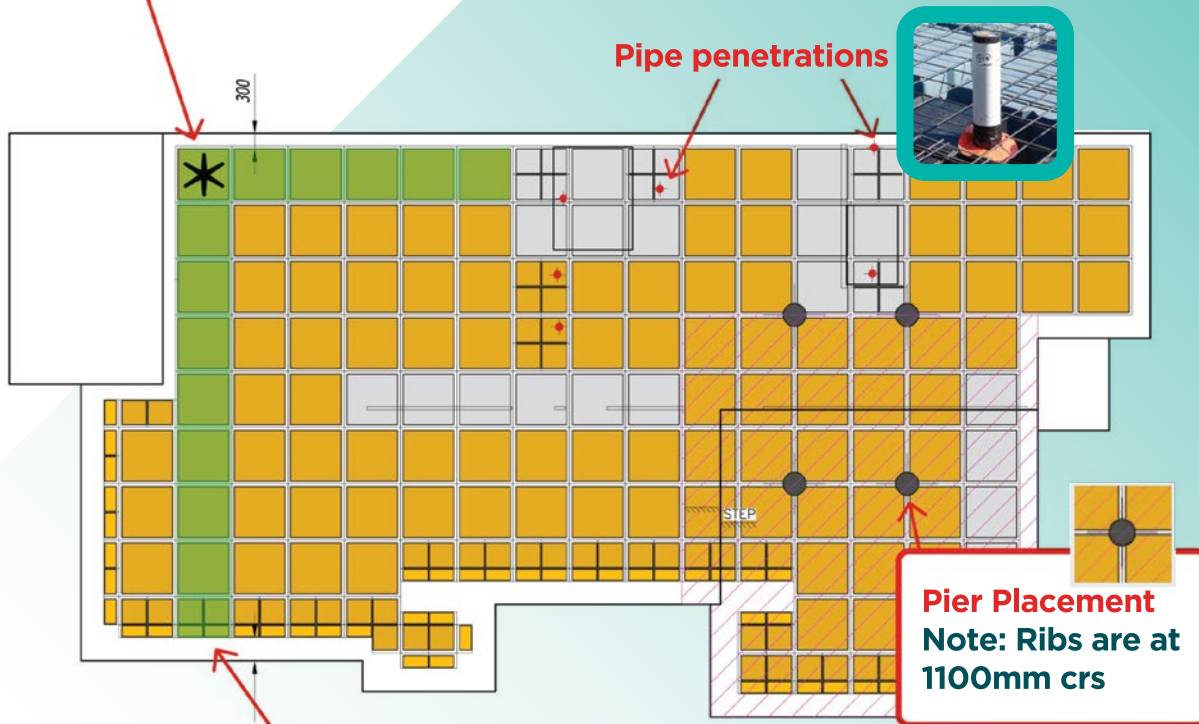
Internal piers to be drilled and poured before NuPod installation Note: Ribs are at 1100mm crs

Step 1 1 Begin laying NuPod from starting pod, marked on layout plan

From this point, lay NuPod in both directions, as shown green line to square installation, and be aware that your placement has the same result as per the plan



DESCRIPTION	MARK
NUPODS-NP300	
NUPODS-NP300-3.....1/8	
NUPODS-NP300-3.....1/4	
NUPODS-NP225	
NUPODS-NP225-3.5.....1/8	
NUPODS-NP225-3.5.....1/4	

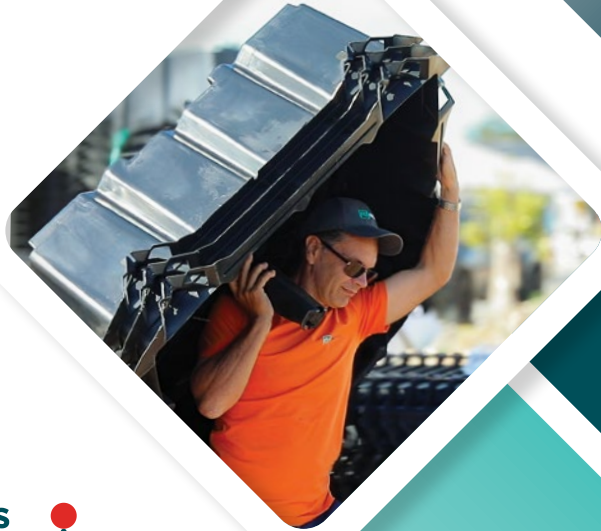


Step 2 2

If the end result is not as per plan, check that couplings are seated correctly and use the flex in the sides of the pods by compression and extension to make up the space required



Extra Tips



Separate pods

Carefully lay the stack on its side for easier part separation



Edge beam

Use NUTC50 trench mesh chair



Laying mesh

Lay mesh closest to slab, then walk on mesh to install remainder of mesh where possible

Placing pods

Place pods such that the built-in mesh chairs alternate as shown



Rib bars

Once NuPod is installed then lay all rib bars



Pouring concrete

Pour concrete on top of the pods along with the ribs/beams to give strength to the pod walls. Always keep the vibrator moving



Operations

Built in mesh support

Built in mesh supports for placement of mesh in **85mm thick slabs**



NuRail 40-55 chair



Use NuRail 40-55 chairs when specification require the lifting of mesh
ie: **100mm thick slabs**

(Alternate the placement of these rails, see image below)





Safety Checklist



Have all involved with the installation had a briefing on how NuPods are to be installed



Have all involved in the installation been shown how to remove the NuPods from the stack safely and easily



Have all involved with the installation been advised where to walk on the NuPods and where not to walk on the NuPods



Have all involved with installation been advised on how to cut and break apart the NP225-3.5, NP300-3, and NP300-3.5



Have NuPods been checked for cracks before being installed



Correct carrying methods (hand in the middle)



Plan mesh installation. (walking on mesh just laid out to avoid walking on pods)



Signature: _____

Date: / /



www.nu-pod.com.au | 1800 NuPods | info@nu-pod.com.au